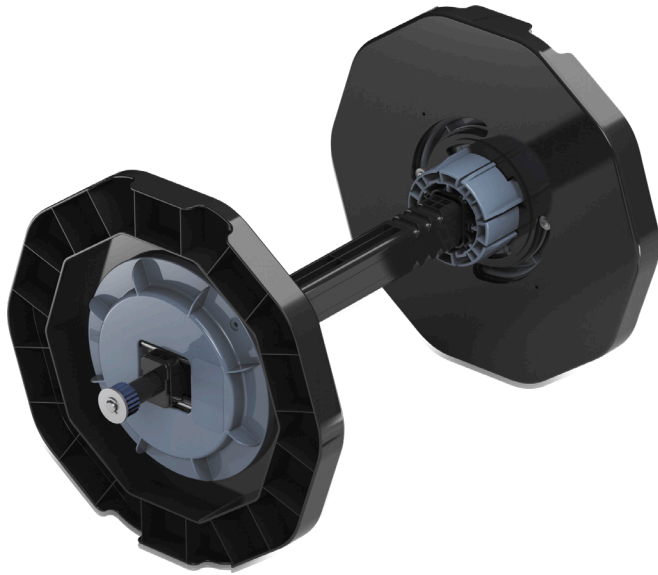


SPINDLE UNIT SURELAB SL-D3000

DATASHEET / BROCHURE



SPINDLE UNIT SURELAB SL-D3000

Best for Epson printer owners who need a compatible accessory to extend or maintain their device.

{Блок шпинделя для SL-D3000. Підтримує носії шириною 4" (10 см), 5" (13 см), 6" (15 см), 8" (20 см), 10" (25 см) і 12" (30 см).}

KEY FEATURES

- **Compatible Epson accessory**
Designed for seamless integration with your Epson printer system
- **Quality assured**
Epson-engineered for reliable, consistent performance
- **Easy installation**
Straightforward setup to extend your printer capabilities
- **Genuine Epson quality**
Built to Epson standards for optimal results with your device

EPSON®

PRODUCT SPECIFICATIONS

TECHNOLOGY

PRINT

For detailed information on printing speeds please visit <http://www.epson.eu/testing>.

SCAN

PAPER / MEDIA HANDLING

Print Margin 0 mm top, 0 mm right, 0 mm bottom, 0 mm left (Wherever margin is defined. Otherwise 3mm Top, Right, Bottom, Left.)

GENERAL

OTHER FEATURES

OTHER

LOGISTICS INFORMATION

SKU	C12C811371
-----	------------

EAN Code	8715946510163
----------	---------------

Country Of Origin	China
-------------------	-------

SPINDLE UNIT SURELAB SL-D3000

WHAT'S IN THE BOX

INK COMPATIBILITY

INK YIELD DATA

Included