

Epson Textile Solutions

# Digital textile printing for any application



**EPSON**<sup>®</sup>  
EXCEED YOUR VISION

# Professional results, lower costs

To achieve outstanding quality in digital textile printing – from industrial scale to small batch production – the fashion industry needs textile printers that consistently deliver superior results at a low cost of ownership. With digital printing, fashion designers can add high-quality, easy-to-reproduce touches to their pieces. Epson's Direct to Fabric, Dye Sublimation and Direct to Garment printers set the industry standard in reliability and flexibility.

Stretched supply chains and e-commerce have transformed the search for an easy-to-use, environmentally friendly way to create garments into a necessity. Whether it's high fashion or fast fashion, the ever-shifting market trends and fast-paced consumer wants have made producers and retailers find solutions that allow them to be more dynamic. That's why digital printing has taken centre stage.

Built with industry needs in mind, digital textile printers allow suppliers to quickly, efficiently and sustainably respond to market changes without sacrificing quality.

Whether you need enhanced productivity for high-volume clothing printing or outstanding levels of quality for intricate details of high-end fashion, digital textile printers can unlock the potential of your business.

Epson offers a choice of models that combine speed, strength and productivity with high quality ink, media, intuitive software and Epson's comprehensive service and support: your complete printing solution with the quality and flexibility to meet every business need.



# Epson technologies you can rely on

## Intelligent inks

Epson inks produce vibrant colours, sharp contours, and smooth gradations. Featuring excellent light/wash fastness, plus resistance to abrasion and perspiration. Our PrecisionDot image processing technology combines three technologies to improve print quality. High-capacity inks are available in various sizes up to 10-litres.

## Premium image quality

Epson's PrecisionCore TFP and Micro TFP printheads produce exceptional image quality and a high resolution. Some of our printers have up to six printheads and offer exceptionally high levels of quality and consistency.

## Specialist software

Our RIP software, Epson Edge Print, was developed to maximize the performance of PrecisionCore Micro TFP printheads and genuine inks. It provides an intuitive interface for easy, 3-step, left-to-right operation, Step and Repeat, colour replacement and other convenient features.

Our printers are supported by other major textile RIP software, giving you the flexibility to use the RIP solution of your choice. Epson Edge Print software works intuitively with other Epson tools.

## Complete print control

Operators will have complete transparency over their print environment thanks to Epson Edge Dashboard and Epson Cloud Solution PORT, both of which provide a wealth of job tracking and diagnostic information for all networked Epson textile printers.

## Simply better service

Experts at Epson are ready to assist and advise you, from equipment demos and sample production, to advice on pre and post processing techniques, we provide full-service support for every stage of the printing process. With genuine Epson ink, and Epson's service and support, our 1-year warranty and optional extended warranty deliver peace of mind with every production run.



# Direct to Fabric printing for exceptional customer satisfaction

## The industry standard for high quality

Digital printing is increasingly recognised as a more economical, organised, and eco-friendly way of making garments by print companies and fashion brands alike. In many cases, it has substituted traditional equipment – breaking down barriers for designing and producing fashion articles as well as products for the home, sports, protection and furniture.

Our industry-leading DTF printer, Monna Lisa, represents the culmination of our expertise in ink and printhead development, image processing, and pre and post fabric treatment. Combined with

our Total Textile Solution, the Monna Lisa delivers the finest print quality with the highest versatility and exceptional customer satisfaction.

## Haute couture

Monna Lisa provides clothing designers from leading Italian and international fashion houses with a wealth of colours and shades to create unique items that combine innovation and artistry.



## Home textiles

Curtains, sofa and armchair fabrics, home linens and contract furnishing fabrics are all produced with different types of yarn. Monna Lisa's extensive variety of inks produces fabrics embellished with designs and long lasting original colours.



## High street fashion

These printers combine the high levels of productivity demanded by fashion retailers with Epson's typical quality standards, for collections that are more than just seasonal, inspired by developing trends in the fashion market.



### Sportswear

Thanks to extensive ink testing, Monna Lisa provides excellent quality even on innovative technical fabrics developed to meet increasingly sophisticated communication and functional needs.



### Fashion accessories

Natural fabrics and innovative yarn for scarves, ties, shoes or handbags are enriched with traditional motifs and original patterns featuring the precision detail and unparalleled repeatability achievable with Monna Lisa.

# Dye Sublimation for speed and reliability

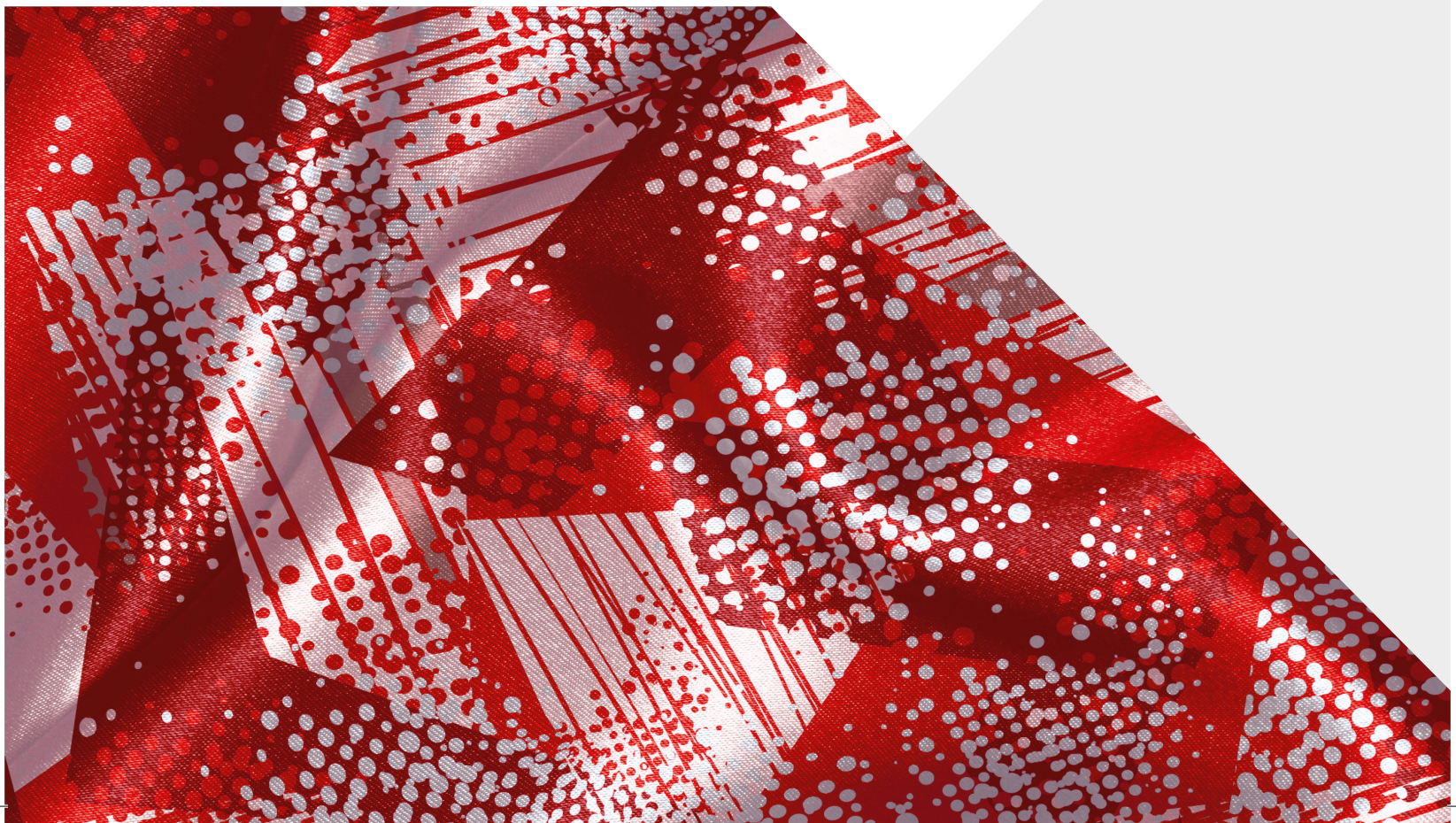
## Limitless creative possibilities

Accelerate your creative process by cutting out the middleman. Digital printing is a production model characterised by flexibility, versatility and a favourable time-to-market index – a perfect tool for processing small batches of fashion garments for an increasingly customised market. But digital textile printing can do even more.

Whether you want to print fashion, home textiles, sportswear, or soft signage for events, creativity becomes limitless with the Epson range of dye sublimation printers.

Epson SureColor SC-F Series dye sublimation printers deliver speed, strength and productivity, offering a complete business solution by combining hardware, ink, media and software.

Match your business needs with a choice of models in formats up to 76-inch (1930mm), printing at up to 255 sqm per hour, with the benefit of High Definition HDK black ink for specialist fashion and apparel printing. Two fluorescent colours offer many more colour permutations - ideal for expanding your offering into eye-catching sportswear. While the Light Cyan and Light Magenta inks are perfect for skin tones and gradation.





### Fashion freedom

Let your creativity run free using our wide colour range to produce high quality results. For fashion designers and entrepreneurs, the SC-F dye sublimation series delivers colour stability and high definition blacks. Whether you're printing a single garment or a longer production run, the series is ideal for dynamic and demanding requirements on a wide range of textiles. Maintaining our printers is quick and easy, giving you more time to focus on creating your designs.



### Delightful home décor

Meet any expectations in the production of curtains, blinds, upholstery, cushions, or other items with a polyester coating. Interior designers and brand owners are assured both quality and sharp photo realistic detail well-suited to styling any commercial or domestic space.



### Outstanding soft signage

Make sure your message is clearly understood with large format signage that really stands out. Epson dye sublimation printers allows print service providers, reproduction shops and advertising agencies to create soft signage using polyester fabrics.



### Vibrant sports clothing

Produce high volume football shirts, cycling and swimming wear and much more with the SureColor SC-F dye sublimation series. Choose from standardised designs you can rely on and take advantage of high productivity to lower your total cost of ownership (TCO) of the printer. Bring your designs to life with vivid fluorescent inks, available with our 6 colour models.

# Direct to Garment printing without compromise

Epson's direct-to-garment (DTG) printers offer a low TCO for mid-to-large garment production businesses and t-shirt suppliers. Retailers can customise items as they see fit with a printer that requires less space, minimises waste and produces excellent results print after print.

## T-Shirt printing

Retailers who demand high levels of accuracy, quick turnaround times, and the ability to produce complex designs on various garments will find that our DTG printers offer reliable production efficiency at speed.

## Cost-effective direct printing

Epson's DTG printers represent a cost-effective way for companies to enter textile printing – without compromising quality, flexibility and cost-effectiveness. Print on T-Shirts, bags, pillows and much more.

## Combining bright colours with comfort

Individual prints or small series are effortless with the DTG models, for which the operating concept was developed. On pure cotton or blended fabrics made of at least 50% cotton, the wide colour gamut of the DTG printers produce vivid colours, sharp contours and smooth gradations. The printed area of the textiles remains soft and flexible, making garments comfortable and durable.

